

Futureproof
your network



 Lite Linke

MTP[®] Elite Solutions

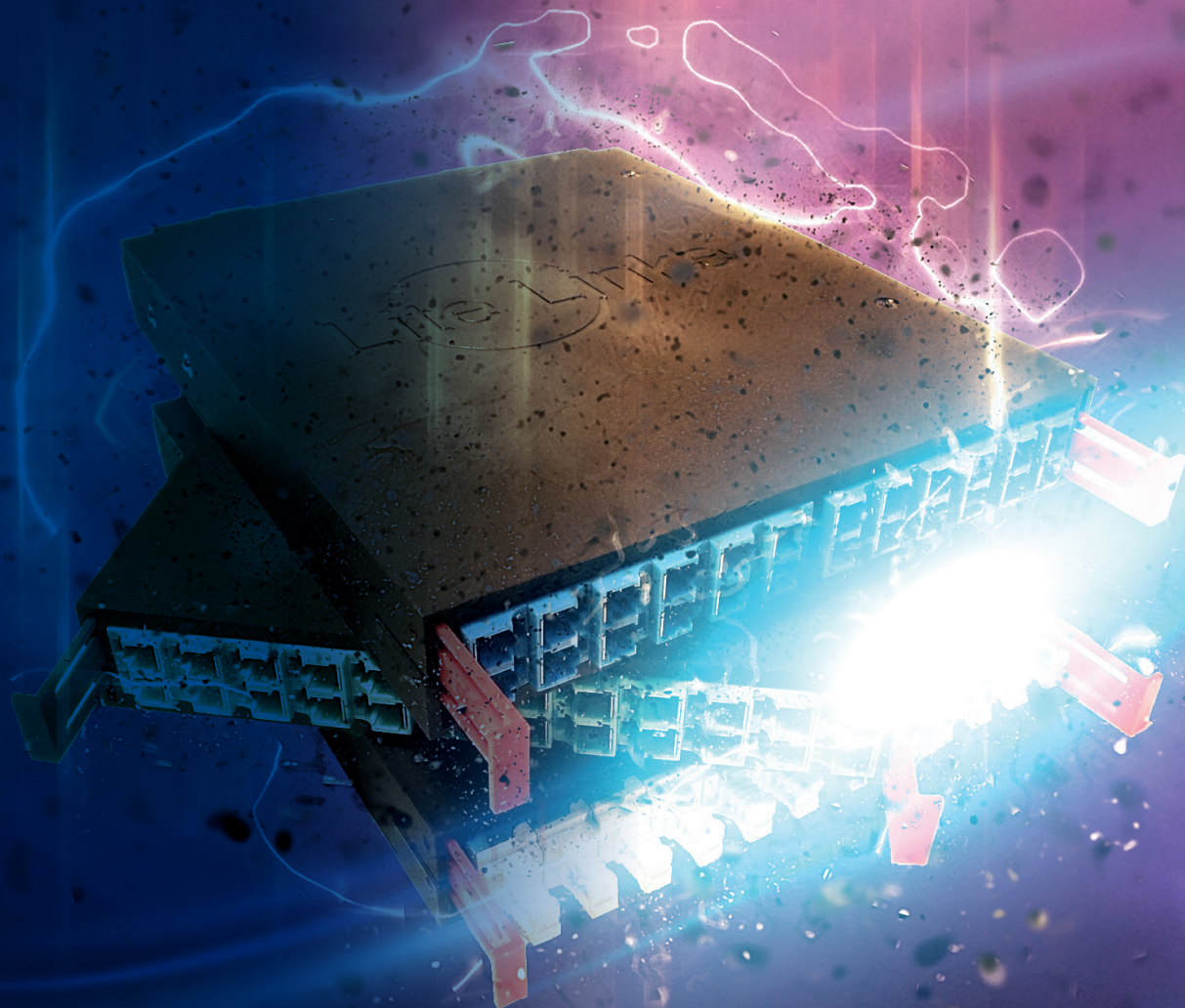
Your Data Centre Infrastructure Partner

The Lite Linke suite of MTP® Elite solutions utilises best-in-class components, bespoke design and UK manufacturing to meet the challenges your network experiences today and tomorrow - in a turnaround time unmatched in our industry.

The simplicity of our **Push. Click. Connect. Repeat.** solution allows for a completely tool-less, rapid and effortless installation.

By adopting the Lite Linke MTP® technology you will be condensing and futureproofing your ever growing network. The Hyper High Density modular design can save over 80% of space in a Data Centre compared to using the generic single fibre architectural design.

We demand standards that not only match but exceed all industry benchmarks to offer reliability, termination expertise and a refreshing reassurance that a Lite Linke MTP® Elite Solution will last a lifetime.



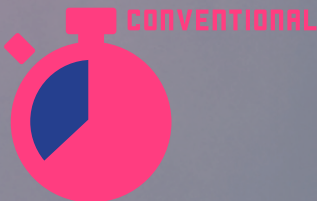
SPEED

MTP® dramatically improves the speed of loading fibre into the rear of a panel. Achieving 24 connections in a rack takes less than a minute with Lite Linke, compared to 30-40 minutes using a single-fibre preterm [for details see litelinke.com].

**24 CONNECTIONS
IN A RACK TAKES**



**UNDER 1 MINUTE
TO INSTALL**



**30/40 MINUTES
TO INSTALL**



**OVER 60
MINUTES TO
INSTALL**

SIMPLICITY

The Lite Linke tool-less system was influenced by the MTP® concept itself. Our R&D team have rethought the entire design to allow for maximum capacity and ease of installation.

THE FUTURE

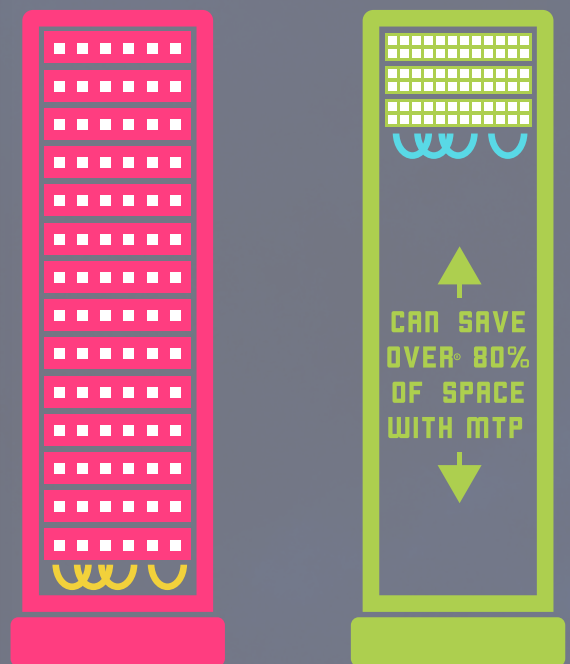
The importance we place upon quality is reflected in our unique modular cassette and chassis system, which allows up to 144 fibres within a 1U space. Complete with Elite grade componentry the Lite Linke futureproof solution is ready for now and the next generation.

SPACE

CONVENTIONAL VS MTP®

Adopting our Hyper-High Density design will minimise your cabinet space by at least 80%, allowing up to 5 times more fibre per cabinet.

**THE BELOW IS A REPRESENTATION
OF A 42U CABINET**

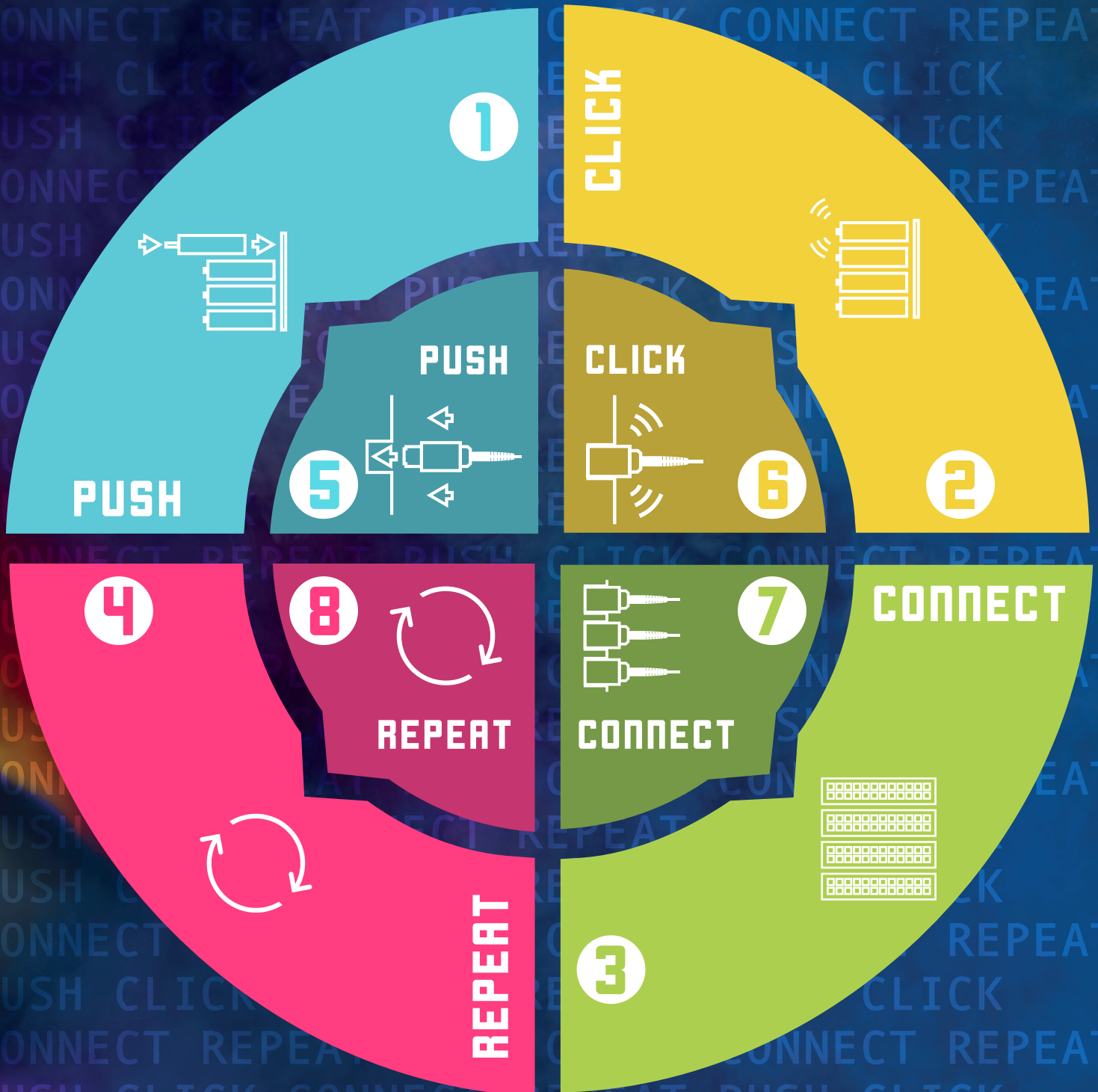


DID YOU KNOW...

The increased density pays for itself because every square metre of floor space in the Data Centre costs US\$ 45,000 - US Conec 2016

PUSH.CLICK.CONNECT.REPEAT.

Our **Push.Click.Connect.Repeat.** solution enables rapid installation or reconfigurations. Install as many as 144 fibres in a 1U space with simplicity and modular versatility.



Lite Linke & MTP® - A solution that satisfies the demand for more fibre, faster. Mindful of complications that high-density design can cause, we've developed an effective no-nonsense solution with excellent cable management.

Our simplistic, Push, Click and Connect system requires No Tools and No Complex training. It is probably the industry's fastest multi-fibre installation from enquiry to operation.

WHY CHOOSE A LITE LINKE MTP® SOLUTION?

GO TOOL-LESS

Replacing the redundant metal panel with a compact PPS cassette, we have developed Push. Click. Connect. Repeat., a tool-less solution that ensures the fastest installation times attainable, all with a simple Push, Click and Connect.

ADOPT MODULAR

This allows for an initial minimum investment of 24 fibres and builds to 144 fibre in a 1U configuration.

The solution will also accept mixing multimode and single-mode cassettes in the same chassis.

ADVANCED EQUIPMENT

Lite Linke ensures your products will be the solutions to last a lifetime. We utilise manufacturing equipment recommended by US Conec, such as Data Pixel, Domaille and Optek's laser cleaver. This helps us fulfilling orders in record time to a specification that exceeding industry standards.

CHOOSE LITE LINKE

The ingenuity of our fully warranted system is attributed to our team's strong industry heritage and our state-of-the-art UK manufacturing facility. A product of the experiences and challenges of our in-house R&D team we have arrived at the next generation, futureproof solution.

CHOOSE THE EXPERTS FOR FUTURE SYSTEMS

ACCESS TO MORE TECHNOLOGY

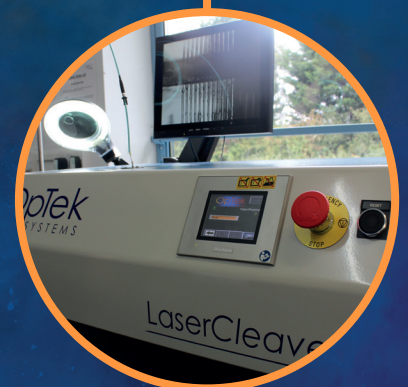
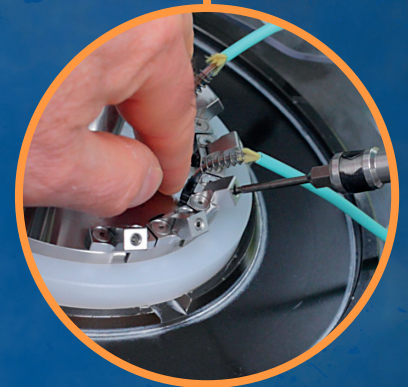
A dual-vendor strategy enables a choice from a wider range of options, which in turn should ensure a user can deploy the best solution for its networking needs.

A MULTI-VENDOR APPROACH PREVENTS VENDOR LOCK-IN

Perhaps the number one reason why network engineers prefer a multi-vendor network is to prevent vendor lock-in. Vendor lock-in can occur when implementing new network solutions into an existing environment or when future upgrades are needed down the road. Both are legitimate concerns and need to be carefully assessed as to the level of risk your organisation is willing to take in this particular category.

THE MULTI-VENDOR APPROACH PROVIDES YOU WITH EXPERTS

The main reason Data Centre Managers and Engineers choose multiple vendors for their infrastructure are that they know they will be receiving the experts in their respected field / department. This ensures your network has the optimum products / solution tailored to your system to prevent any down time.



Lite Linke Product Range

MTP® 3U CHASSIS

MTP® TUFF TRUNK

RECESSABLE MTP® ADAPTER PANEL

MTP® MODULAR CASSETTE

MTP® 1U CHASSIS

MTP® LITE TRUNK

MTP®
MULTI LITE
TRUNK

MTP®
MULTI TUFF
TRUNK

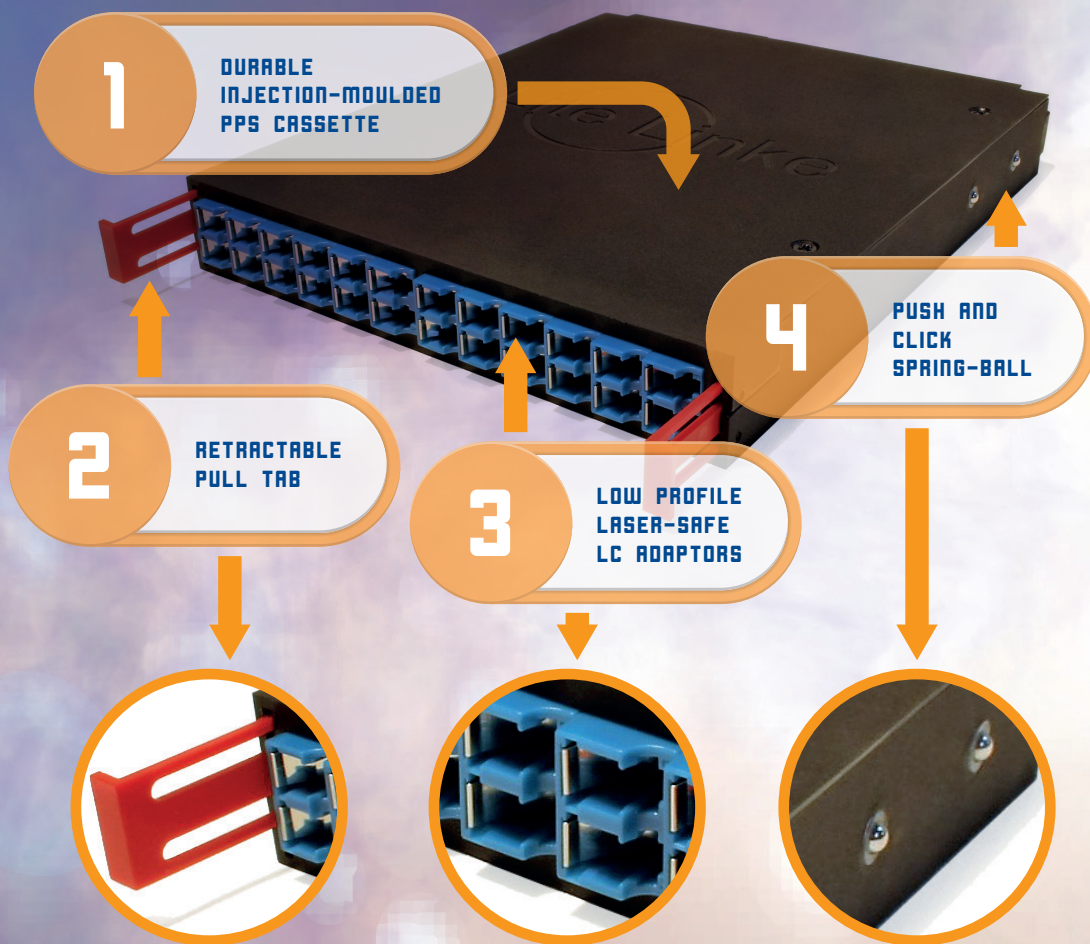
MTP®
HARNESS
LINK

LC HD
UNI-BOOT
SWITCHABLE

MTP® Modular Cassette

Our MTP® Elite Solution is a premium grade, exceptionally high density 19" cassette and chassis system. It operates on similar lines to conventional networks in that it has a trunk cable, patch panels at each end and jumper cables patching to the operating hardware.

However, what differentiates our MTP® Elite Solution is that it provides a more efficient, condensed method - a tool-less and pluggable high density population fibre optic network, without the need for expensive on site splicing, which therefore reduces installation time.



KEY FEATURES

Hyper High Density
can be scaled up to 144f in 1U and 480f in 3U

Completely tool-less
no tools are required to install a Lite Linke MTP® Elite Solution

Cassettes held into chassis
via spring-ball 'Push and Click' fittings

Laser safety shutters
fitted to all LC adaptors to prevent eye damage

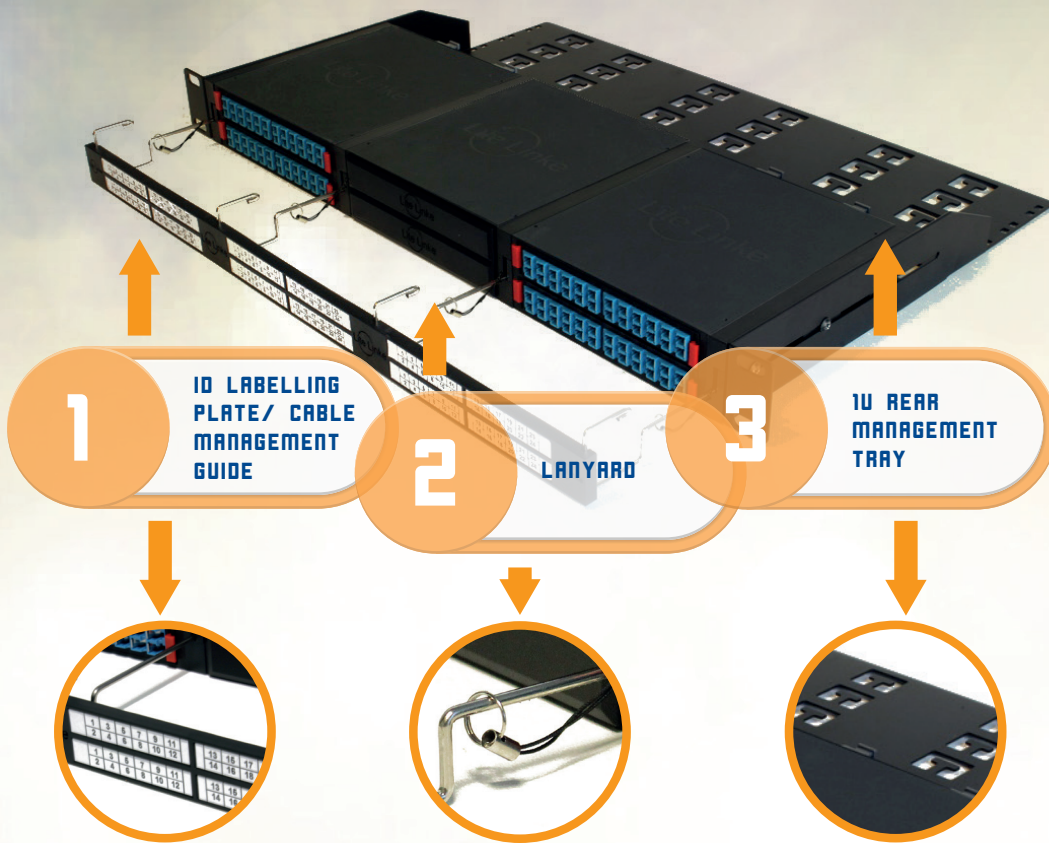
Uni-Boot patch cords
reduce the cable space required by 50%

Elite Premium Grade Fan-outs
for low budget loss requirements

*Our LC Cassettes are only designed for use with LC HD patchcords

MTP® Chassis

1U CHASSIS CAPABILITY OF 144 FIBRES



KEY FEATURES

Hyper High Density - can be scaled up to 144f in 1U space

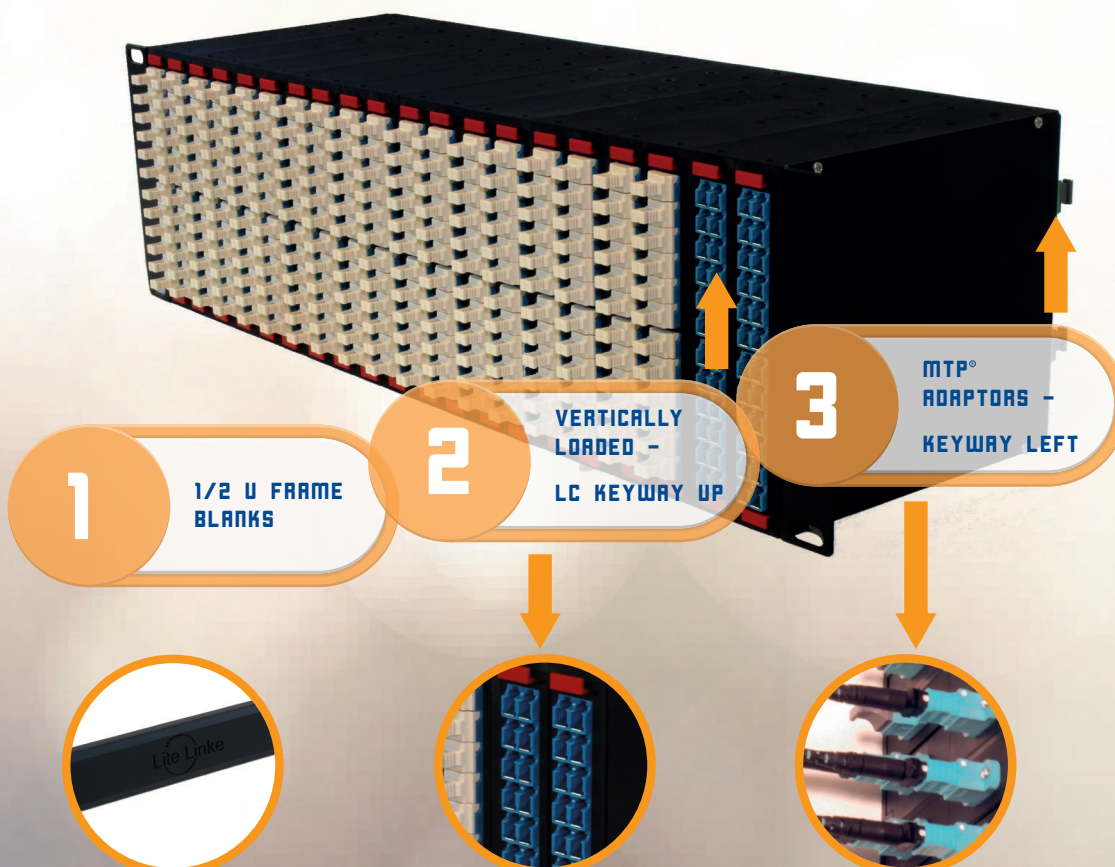
Completely Tool-less - Instantly connects with a simple Push. Click. Connect. Repeat.

12f or 24f MTP® connectivity options with 6x modular cassettes

Completely pluggable high speed fibre optic network

High Performance and light weight PPS injection moulded material

3U CHASSIS CAPABILITY OF 480 FIBRES



KEY FEATURES

Hyper High Density - can be scaled up to 480f in 3U

Holds up to twenty 1/2U 24f cassettes - OM4 or OS2 fibre grades

Rear loading up to 40x 12f MTP® Elite Connectors or 20x 24f MTP® Elite Connectors

Lite Linke MTP® Cassettes are loaded vertically in a 3U Chassis LC Adaptor - Keyway UP, MTP® Adaptor - Keyway Left (Rear View)

MTP® Trunk Cables

MTP® LITE TRUNK CABLES

MTP® Lite Trunk Cables are of a lightweight single jacket construction, designed to optimise space saving of trunk patching. The 12f cable has a 3.2mm outer diameter (OD) while the 24f version is marginally larger at 3.8mm.

These compact cables are packed with Kevlar® which provides the necessary endurance for routing and patching purposes, though best used within a comms room or data suite environment, as opposed to backbone cabling.



KEY FEATURES

MTP® are high density connectors with up to 24f in a traditional SC Simplex adaptor footprint

MTP® Trunk Assemblies present a 'Push and Click' to connect for rapid installation of high fibre count network links

Elite Premium Grade components for low budget loss requirements

MTP® TUFF TRUNK CABLES

MTP® Tuff Trunk Cables are of a robust, double-jacket construction, designed for longer length trunk patching. Incredibly, the provision of a second jacket benefits the cable by an additional 500N of crush resistance to an overall total of 1000N. The cables retain their compactness with only 4.7mm OD for 12f and 5.4mm for the 24f version. These cables are packed with Kevlar® which provides the necessary endurance for routing and patching purposes, providing links between comms rooms or data centres.

On both the MTP® Lite Trunk and MTP® Tuff Trunk Cables, only genuine MTP® Connectors are fitted. The Elite MTP® ferrule is designed for applications requiring the highest performance. It provides exceptional benefits over the conventional MPO connectors, including patented floating ferrule design, patented elliptical, high precision guide pins and removable housing, allowing rapid gender change and reversing polarity. In addition, both the MTP® Lite Trunk and MTP® Tuff Trunk Cables facilitate rapid deployment of high density backbone cabling in data centres and other high fibre count environments, reducing network installation or reconfiguration time and cost. They are used to interconnect cassettes, panels or ruggedised MTP® Harness links.



MTP® MULTI-LITE TRUNK CABLES

MTP® Multi-Lite Trunk Cables are a neat solution for providing up to 4x MTP® to MTP® links within one ruggedised cable thus reducing the need to install four separate cables.

Our Slimline break-out has the option of being fitted with a 20mm gland for installation into a patch panel or other closure.

Our standard tail configuration is staggered, longest tail being 0.5mtr (2mtr Max) length as this gives the ability to apply a protection sock.

The cable construction consists of a 48core Multi-Loose Tube with a nominal 10mm LSZH jacket.



MTP® MULTI-TUFF TRUNK CABLES

The MTP® Multi-Tuff trunk cables are designed to route up to 12x 12f trunks within one multi-loose tube cable.

The LT Maxi Break-out with 20mm compression gland fitted as standard enable the assembly to be fitted directly to a patch panel, ODF or closure.

Our standard presentation for each tail length is 0.5mtr with a staggered configuration which then gives the ability to apply a protection sock. However, we do offer up to 2mtr tail lengths with an optional no stagger.

Multi-Tuff trunks make use of multi-loose tube cables, with their trusted mechanical properties and low losses, all within a Low Smoke Zero Halogen (LSZH) jacket.



MTP® Harness Link

Ruggedised harnesses or hydra fan-outs, as they are sometimes known, allow the direct connection between MTP® adaptors and other connector types, such as LC. They are often referred to as QSFP cable links for SR4 and CXP parallel optics applications.

Typically used with QSFP 40G SR4 connectivity, with tail break-out units split into 8f or 4x 10G channels, they enable direct patching from the MTP® port on the switch to LC port on the MTP® Cassettes. The harnesses are manufactured to a custom length and are interoperable between differing QSFP module manufacturers.

Our QSFP Cable Harness examples:

12f cables - 12f MTP® to 4x, 8x or 12x LC

24f cables - 1x 24f MTP® to 24x LC or 1x 24f MTP® to 2x 12f MTP® or 1x 24f MTP® to 3x 8f MTP®

48f cables - 4x 12f MTP® to 4x 12f MTP® or 2x 24f MTP® to 2x 24f MTP® or 2x 24f MTP® to 4x 12f MTP® or 2x 24f MTP® to 3x 16f MTP®

There is a choice of strain relief boots; flexi-boot, short or standard options. The flexi-boot reduces the need for cable management as the boot is simply positioned as required and is retained by the integral support wire. The short boot option, at 18mm in length, provides the smallest bend radius and is useful where the front of panel patching distance is very short.

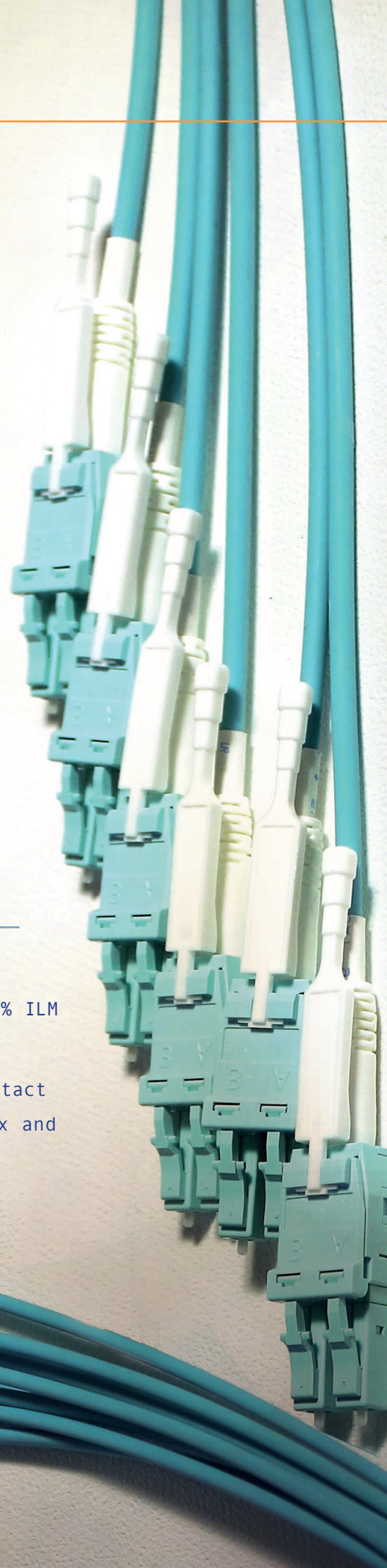
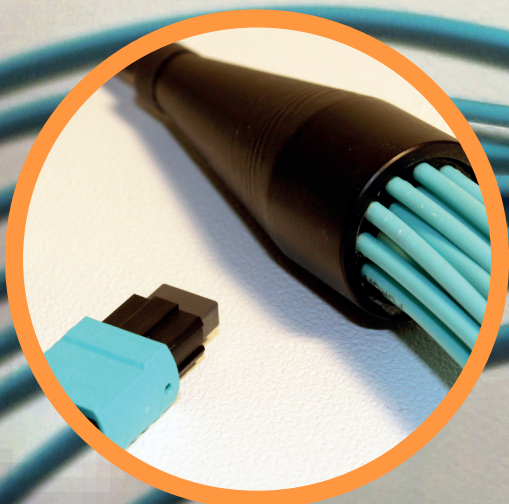
The LC HD Uni-Boot is our most compact solution providing two fibres in a single tube with the added benefit of a switchable LC pull tab enabling removal of the connector without disturbing neighbouring ports. The switchable function allows for changing of polarity of the LC Connector, post manufacture.

KEY FEATURES

Testing exceeds industry standards with 100% visual, 100% ILM and 100% interferometer testing for complete confidence

High Spring Force (HSF) MTP® Connectors ensure uniform alignment across 24x lanes and optimise the physical contact

Connector Types Available LC HD Switchable, LC HD Simplex and LC Dx Available



LC HD Uni-Boot Switchable

Utilising the feature packed LC HD Uni-Boot Switchable Connector on assemblies offers the opportunity to make the most efficient use of rack space.

Combining two fibres into a single round 2 or 3mm jacket can save up to half the patching cable space, while the disconnection latch makes for easy removal of the assembly without disturbing the neighbouring ports.

The connector has been further enhanced with the ability to switch polarity in the field without the need for re-termination making it extremely flexible. It is also available in a variety of boot options including short and flexi-boot to meet varying preferences in cable management.

Colour coded cables and connector options are available to suit OM3, OM4, OM4+ and SM G.652.D and G.657A2 fibres.

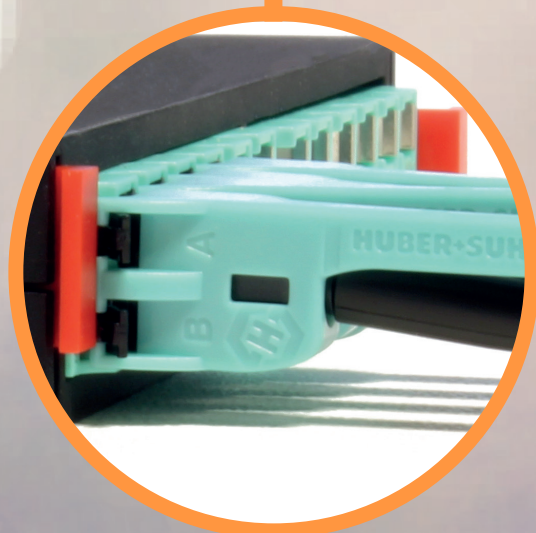
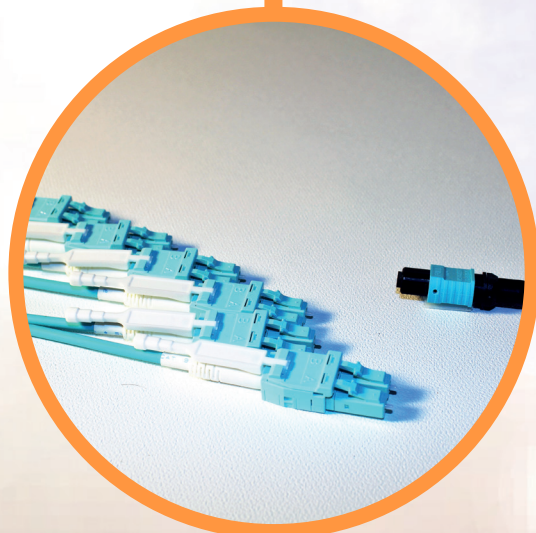
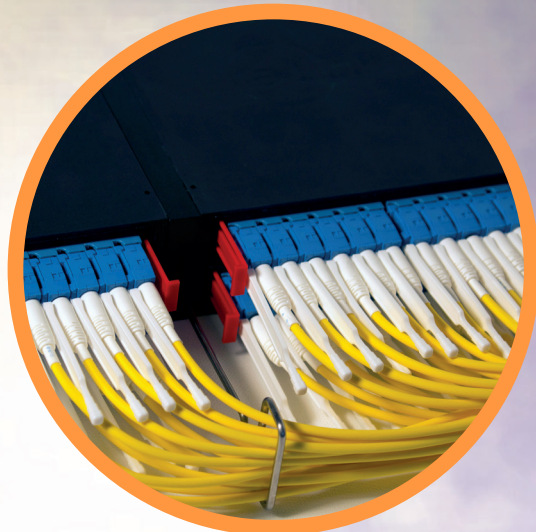
*Our LC Cassettes are only designed for use with LC HD patchcords.

KEY FEATURES

LC Duplex Connector with single boot and cable jacket reduces cabling space required for easy management

Allows for use of stacked LC adaptors thus increasing population density

Ability to switch polarity out in the field



Accessories

IBC CLEANING TOOLS

- Insert and click to clean - 525+ cleans per unit
- Cleans LC & MTP® male and female connectors and inside adaptors
- Suitable for multimode & single-mode (8°A)



CLETOP CLEANING TOOLS

- Replacement reels are easy to install and reduce the cost per cleaning
- 400+ cleanings
- Eliminates electrostatic charge



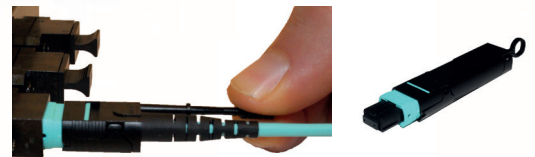
OPTIPOP CLEANING TOOLS

- Replacement reels are easy to install and reduce the cost per cleaning
- 400+ cleanings
- Eliminates electrostatic charge



MTP® ACCESSORIES

- MTP® Push-Pull Tab for easy extraction in densely populated cabinets
- MTP® Loopback assemblies are custom made to suit method required, utilising 12 or 24f connectors



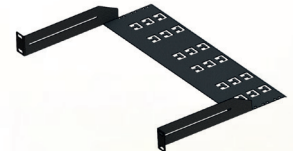
EXFO FIP-400 AND CONNECTORMAX2

- Capture, analyse & save images to PC or Android devices
- Wifi FIP-400 Inspection & ConnectorMax2 software
- MTP® single fibre connector & adaptor tips available



IU REAR MANAGEMENT TRAY

- Heavy duty mild steel construction
- 24x cable retention positions
- Includes cable retainers and ties



BRADY LABEL PRINTER KIT

- BMP21-PLUS
- Rugged and durable Brady printer
- This printer ships in a hard case with a Li-ion Battery, UK Power Cord + Accessories



VISUAL FAULT LOCATOR 1.25MM

- Multimode and Singlemode fibre compatibility
- Class 3A laser diode
- Output mode in either Continuous or Flashing (2-3 Hz)



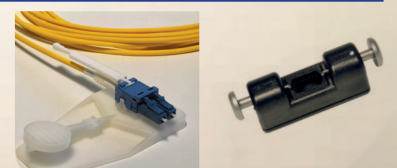
TEST REFERENCE LEADS

- Low insertion loss, high return loss
- A Grade connectors - Max <math><0.15\text{ dB}</math>
- Optimised geometry and enhanced optical performance



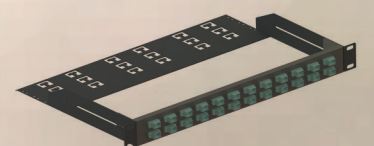
SWITCHABLE / REMOVABLE TOOL

- The LC Switchable HD Tool allows polarity change within an LC Duplex connector
- The MTP® Housing Removable Tool allows for easy and efficient polarity change



RECESSABLE MTP® ADAPTER PANEL

- Capability of up to 24 MTP® adaptors, scaling up to 576 fibres
- Capability of up to 24 MTP® Duplex adaptors, scaling up to 1152 fibres
- Panel can be recessed to the customers preference



Our History

Our story begins in 1993 with the creation of our parent company, Leader Optec. Founded by a small but dedicated team of people from varying connectivity and engineering backgrounds, we soon developed into an industry leader.

The Premium Lite Linke product suite brings together the experience and skill amassed over almost a quarter of a century.

Based in St. Asaph, North Wales, we pride ourselves on our quality, integrity, innovation and total dedication to our customers.

**WE ARE
LITE LINKE.
CONNECTIVITY
FOR THE FUTURE.**



/LiteLinke/



/lite_linke



/company/10994098/



+44 (0) 1745 586607



PAUL DESMOND
MANAGING
DIRECTOR



MIKE LENIHAN
COMMERCIAL
MANAGER



KYLE THOMAS
MARKETING
EXECUTIVE



PAUL JAYCOCK
SALES
EXECUTIVE



GREG HILDITCH
PRODUCT /
TECHNICAL ENGINEER



Contact Us

Unit 15 Lite Linke Buildings
St. Asaph Business Park
St. Asaph
Denbighshire
LL17 0LJ

enquiries@litolinke.com
www.litolinke.com



MTP[®] Elite Solutions