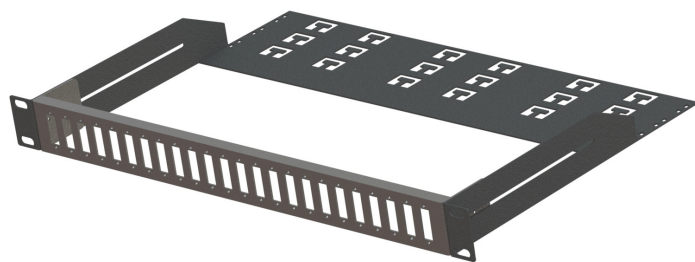
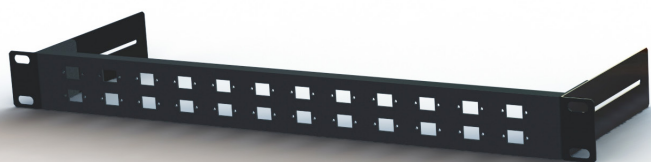
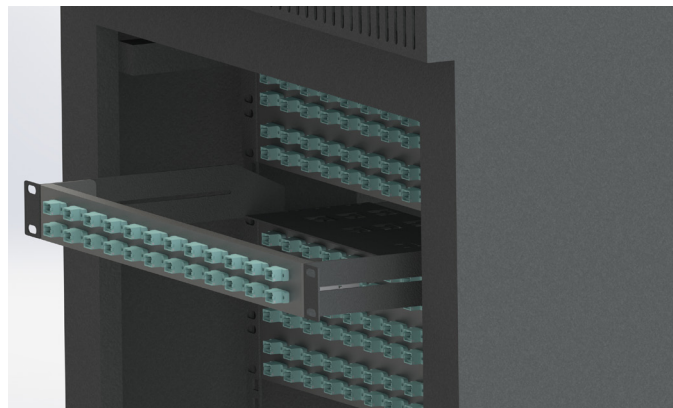


MTP® Through Coupler Panel

The Lite Linke MTP® Through Coupler Panel is a robust solution which maximises the number of fibres in a 1U slot. This panel has the capability to hold either 24x simplex MTP® or 24x duplex MTP® adaptors, meaning it can be scaled to hold 1152 fibres in a 1U space.

The MTP® Through Coupler Panel can come with 2 fixing options, the first being a stand alone front plate with brackets attached either side for fixing to cabinets. These brackets give the coupler plates the ability to recess 110mm. The second option is a front plate with a rear management tray attached. The rear management tray gives the coupler plates location points for cable management whilst still having the ability to recess 130mm.

This panel has a universal design to accommodate other fibre adapters such as LC Quad , LC Duplex, SC Simplex and SC duplex adapters. Utilising LC Quad will still give the scalability of 96 fibres within a 1U slot.



Features & Benefits

- Exceptionally High Density Solution – Up to 1152f in a traditional SC Duplex adapter footprint (Utilising 24x MTP® Duplex Adaptors)
- Higher Density Population reduces the overall cost of 1U Spacing
- Multimode and Singlemode versions available
- The ability to recess 130mm using the rear management option
- lightweight (compared to generic patch panels)
- Quick and effective mating solution

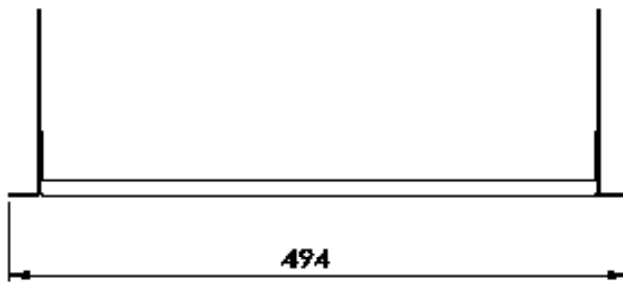
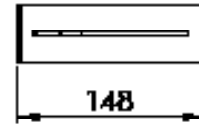
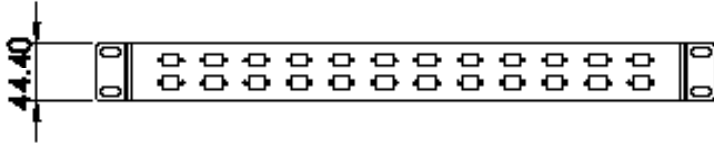
Specification

ELEMENT	CHARACTERISTIC
Dimensions (mm) (L x W x H)	With Rear Management = 494 x 304 x 44.5 w/o Rear Management = 494 x 148 x 44.5
Finish	Mild steel, Powder coated
RAL	Black RAL: 9005
U Size	1U
Operation Temperature	-40 ~ +80°C
Compliant to	RoHS, REACH

Application

- Optical Patching
- Data centres, premise installations, telecommunication networks
- Ethernet, Fibre Channel, ATM, LAN, MAN, and WAN
- Data Communication

With Brackets



With Rear Management

