

LC Switchable HD Connector

Utilising the feature packed LC XD Switchable Uni-boot connector on your assemblies offers the most efficient use of rack space.

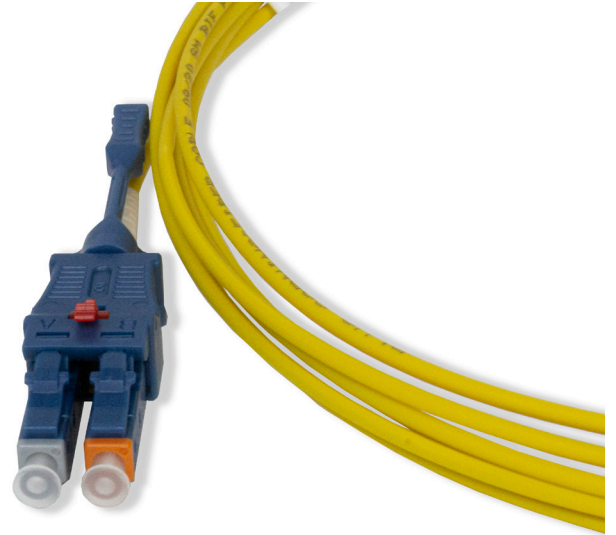
Combining two fibres into a single round 2mm jacket can save over half the patching cable space while the disconnection latch makes for easy removal of the assembly without disturbing the neighbouring ports.

The connector has been further enhanced with the ability to switch polarity in the field without the need for any tools or re-termination, making the connector extremely flexible.

It is also available in a variety of boot options including short and flexi-boot to suit your preference in cable management.

Colour coded cables and connector options are available to suit OM3, OM4, OM4+ and SM G.652.D and G.657.A2 fibres.

The assemblies are manufactured within our state-of-the-art termination facility where meticulous attention provides assured quality and peace of mind. From our North Wales base, fast-manufacturing turnaround is our speciality with custom length assemblies made within days of ordering.



Features & Benefits

- LC Duplex Connector with single boot and cable jacket
- Reduces cabling space required for easy management
- Allows for use of stacked LC adapters thus increasing population density
- Flexi-Boot or Short Boot options for enhanced cable management
- Removal latch for easy, non-disrupted disconnection
- Switchable polarity in the field (no tool required)
- Custom length assemblies manufactured and 100% tested in the UK
- IEC 61574-20, TIA/EIA 604-10A Intermateability
- Multimode, single-mode and APC colour coded versions
- OM3/OM4 Multimode and G.652.D/G.657.A2 single-mode options
- Suitable for use on QSFP-40G-SR4 MTP®- LC assemblies
- High performance, low loss assemblies
- Colour coded multimode and single-mode LSZH jacket

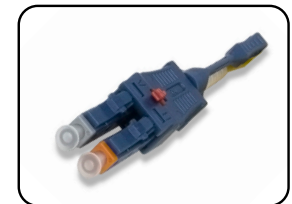
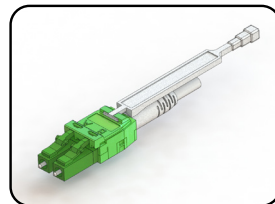
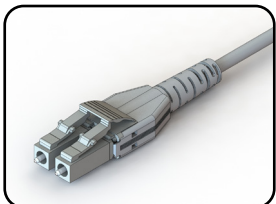
Specification

ELEMENT	CHARACTERISTIC
Fibre (ISO/IEC 60793-2)	OS2 = Yellow, OM3 = Aqua & OM4 = Heather Violet
Cable (LSZH)	Round cable 2mm OD
Housing	LC Multimode HD = Aqua / Heather Violet LC Single-mode HD = Blue
Polarity	Switchable A to A or A to B
Operation Temperature	-40 ~ +80°C

Application

- High density patching in cassettes and panels
- Interconnects on patch cords or pre-terminated cables
- Parallel optics assemblies
- Data centres, storage and switch rooms

Available Uniboot Options



Optical Fibre Specifications

Multimode Fibres

Multimode Fibres IEC 60793-2 ISO/IEC 11801 EN 50173 -1&2	Overall Bandwidth (MHz x km)		Max. Link Length for 1 GBit/s (m)		Max. Link Length for 10 GBit/s (m)		Fibre Attenuation (dB/km)	
	850nm	1300nm	850nm (1000Base-SX)	1300nm (1000Base-LX)	850nm (10GBase-SR) (10GBase-SW)	1300nm (10GBase-LX4)	850nm	1300nm
50/125 um								
OM3	≥1500	≥500	1000	600	300	300	≤2.7	≤0.7
OM4 Laser Optimised	≥3500	≥500	1000	600	550	300	≤2.7	≤0.7

Single-mode Fibres

Single-mode Fibres IEC 60793-2 ISO/IEC 11801 EN 50173 -1&2	Chromatic Dispersion		Cut-off-Wave Length (cabled) (nm)	Point Discontinuity (dB)	Fibre Attenuation (dB/km)			Fibre Geometrical Properties (um)		
	1310nm	1550nm			1310nm	1380-1386nm	1550nm	Mode-field	Cladding	Coating
9/125 um										
OS2(ITU-T G.652.D)	≥3.5	≥18.0	≥1260	≤0.1	≤0.34	≤0.31	≤0.22	9.2 ±0.4	125 ±1	245 ±5
OS2 (G.657.A2)	≥3.7	≥18.5	≥1260	≤0.1	≤0.38	≤0.35	≤0.25	8.8 ±0.4	125 ±1	245 ±5

Available Accessories



Viavi MPOLX



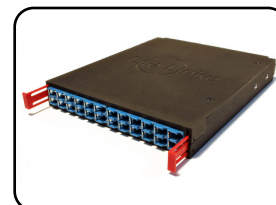
Connector Cleaner



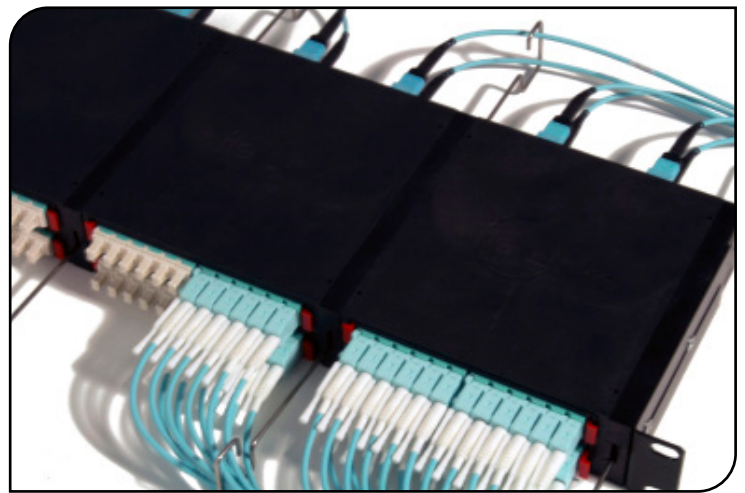
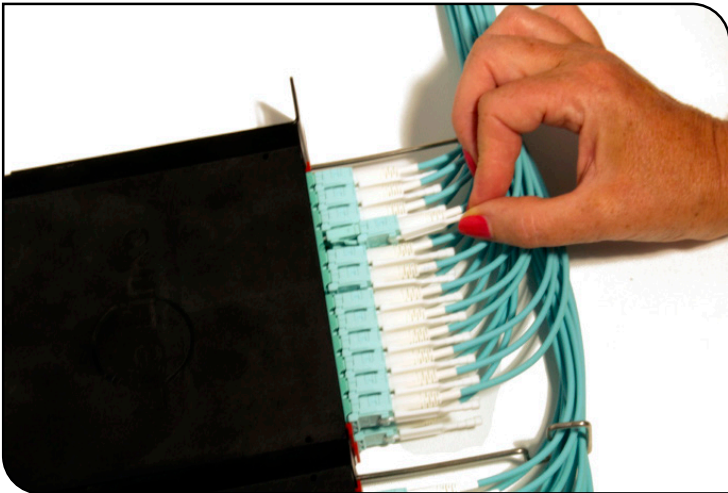
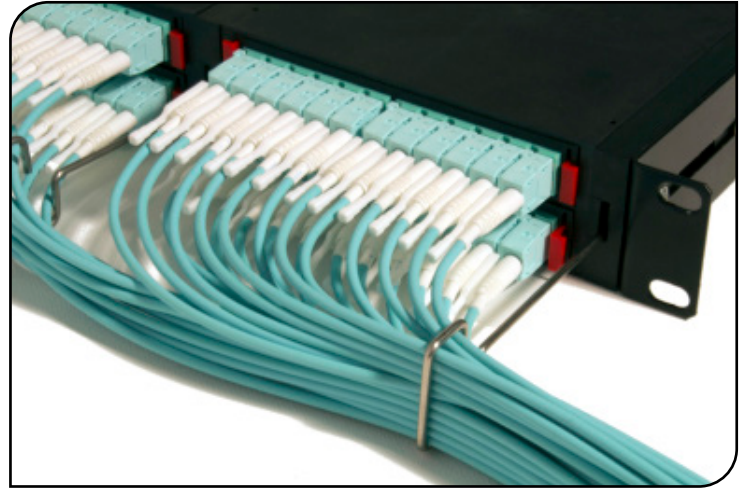
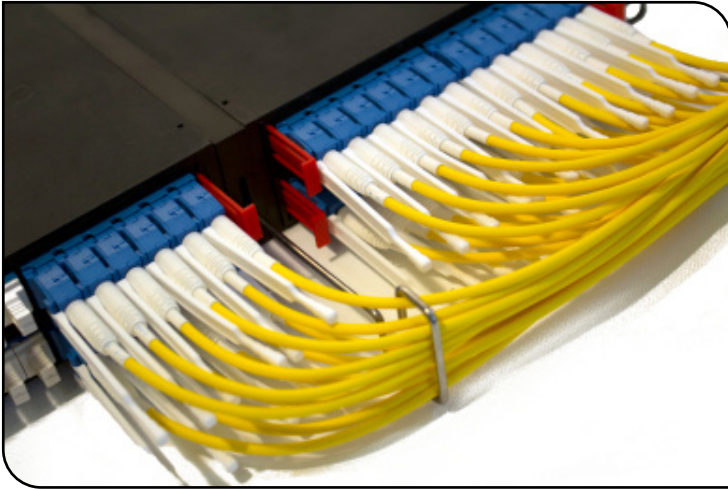
Cleaning Pen



Visual Fault Locator



MTP® Modular Cassette



FIA
The Fibreoptic Industry Association
CORPORATE MEMBER



Certificate Number 3927

