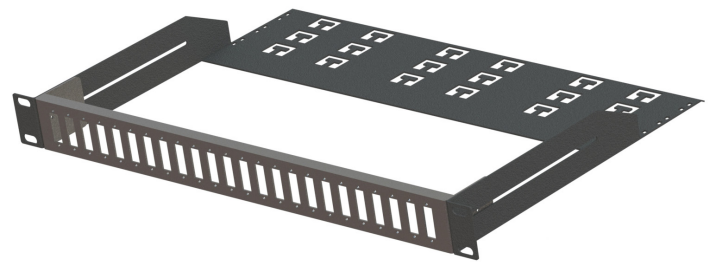
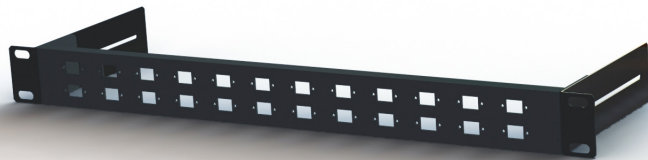
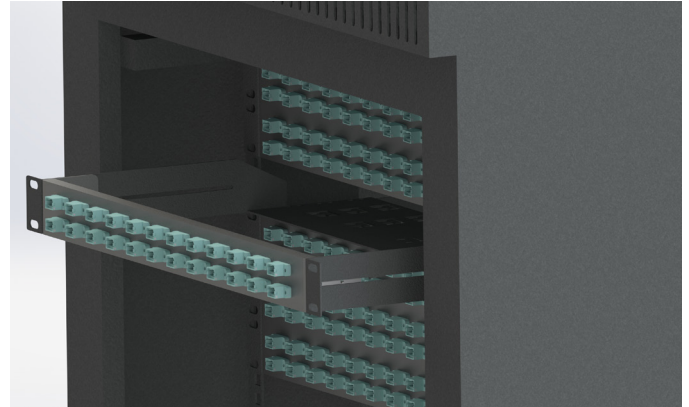


# MTP® Through Coupler Panel

The Lite Linke MTP® Through Coupler Panel is a robust solution which maximises the number of fibres in a 1U slot. This panel has the capability to hold either 24x simplex MTP® or 24x duplex MTP® adaptors, meaning it can be scaled to hold 1152 fibres in a 1U space.

The MTP® Through Coupler Panel can come with 2 fixing options, the first being a stand alone front plate with brackets attached either side for fixing to cabinets. These brackets give the coupler plates the ability to recess 110mm. The second option is a front plate with a rear management tray attached. The rear management tray gives the coupler plates location points for cable management whilst still having the ability to recess 130mm.

This panel has a universal design to accommodate other fibre adapters such as LC Quad, LC Duplex, SC Simplex and SC duplex adapters. Utilising LC Quad will still give the scalability of 96 fibres within a 1U slot.



## Features & Benefits

- Exceptionally High Density Solution – Up to 1152f in a traditional SC Duplex adapter footprint ( Utilising 24x MTP® Duplex Adaptors)
- Higher Density Population reduces the overall cost of 1U Spacing
- Multimode and Singlemode versions available
- The ability to recess 130mm using the rear management option
- lightweight (compared to generic patch panels)
- Quick and effective mating solution

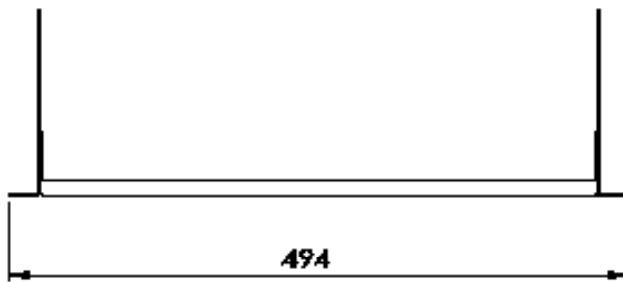
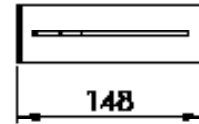
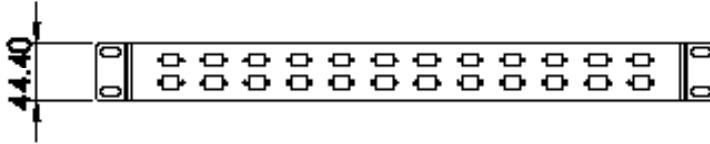
## Specification

ELEMENT	CHARACTERISTIC
Dimensions (mm) (L x W x H)	With Rear Management = 494 x 304 x 44.5 w/o Rear Management = 494 x 148 x 44.5
Finish	Mild steel, Powder coated
RAL	Black RAL: 9005
U Size	1U
Operation Temperature	-40 ~ +80°C
Compliant to	RoHS, REACH

## Application

- Optical Patching
- Data centres, premise installations, telecommunication networks
- Ethernet, Fibre Channel, ATM, LAN, MAN, and WAN
- Data Communication

## With Brackets



## With Rear Management

